



STATE OF CONNECTICUT

CONNECTICUT SITING COUNCIL

Ten Franklin Square, New Britain, CT 06051

Phone: (860) 827-2935 Fax: (860) 827-2950

E-Mail: siting.council@ct.gov

www.ct.gov/csc

February 17, 2016

TO: Council Members

FROM: Melanie Bachman, Acting Executive Director *MB*

RE: **DOCKET NO. 465** – The United Illuminating Company application for a Certificate of Environmental Compatibility and Public Need for the construction, maintenance, and operation of a 115/13.8-kilovolt (kV) replacement substation facility located on an approximately 1.5 acre portion of two adjoining UI-owned parcels directly adjacent to UI's existing Baird Substation, 1770 Stratford Avenue, Stratford, Connecticut, and related transmission structure and interconnection improvements.

The Connecticut Siting Council has scheduled a field review for this docket for February 25, 2016 beginning at 2:00 p.m. Parking is available in the gated lot located directly east of the site. (See attached Google Earth photograph.) Boots are suggested.

A public hearing is scheduled for February 25, 2016 beginning at 3:00 p.m. and continued at 7:00 p.m. in the Council Chambers at the Stratford Town Hall, 2725 Main Street, Stratford.

A map and directions are enclosed.

Enclosures

- c: Secretary of the State (via e-mail service)
- Parties and Intervenors (via e-mail service)
- BCT Reporting LLC (via e-mail service)
- Pryme Tyme Entertainment (via e-mail service)

MB/MP/cm

DIRECTIONS - DOCKET 465 – STRATFORD

TO: Replacement Substation Site – 1770 Stratford Avenue, Stratford

From Enfield Area

Take Interstate 91 South to I-95 South in the New Haven area.

Take I-95 South to Exit 31 (South Avenue) in Stratford.

At the end of the exit ramp, turn right onto South Avenue.

Proceed on South Avenue for about 0.1 miles until it ends at the intersection with Stratford Avenue (Route 130).

Proceed directly across Stratford Avenue to the gated parking lot on the opposite side of the street.

From Hartford Area

Take I-91 South to I-95 South in the New Haven area.

Take I-95 South to Exit 31 (South Avenue) in Stratford.

At the end of the exit ramp, turn right onto South Avenue.

Proceed on South Avenue for about 0.1 miles until it ends at the intersection with Stratford Avenue (Route 130).

Proceed directly across Stratford Avenue to the gated parking lot on the opposite side of the street.

From New Britain Area

Take Route 9 South to I-91 South.

Take I-91 South to I-95 South in the New Haven area.

Take I-95 South to Exit 31 (South Avenue) in Stratford.

At the end of the exit ramp, turn right onto South Avenue.

Proceed on South Avenue for about 0.1 miles until it ends at the intersection with Stratford Avenue (Route 130).

Proceed directly across Stratford Avenue to the gated parking lot on the opposite side of the street.

From Stamford Area

Take I-95 North to Exit 31 (Honeyspot Road).

At the end of the exit ramp, turn left onto Honeyspot Road.

Proceed on Honeyspot Road for about 0.2 miles until it ends at the intersection with Stratford Avenue (Route 130).

Proceed directly across Stratford Avenue to the gated parking lot on the opposite side of the street.

From Stonington Area

Take I-95 South to Exit 31 (South Avenue) in Stratford.

At the end of the exit ramp, turn right onto South Avenue.

Proceed on South Avenue for about 0.1 miles until it ends at the intersection with Stratford Avenue (Route 130).

Proceed directly across Stratford Avenue to the gated parking lot on the opposite side of the street.



TO: Stratford Town Hall, Council Chambers, 2725 Main Street, Stratford

From the Replacement Substation Site (1770 Stratford Avenue, Stratford)

Turn left onto Stratford Avenue (Route 130).
Proceed on Stratford Avenue (Route 130) for about 0.7 miles.
Turn left onto Main Street (Route 113).
Proceed on Main Street (Route 113) for about 0.8 miles.
The Stratford Town Hall is located on the left.
The parking area is also located on the left just past the Town Hall.

From Enfield Area

Take I-91 South to I-95 South in the New Haven area.
Take I-95 South to Exit 31 (South Avenue) in Stratford.
At the end of the exit ramp, turn right onto South Avenue.
Proceed on South Avenue for about 0.1 miles until it ends at the intersection with Stratford Avenue (Route 130).
Turn right onto Stratford Avenue (Route 130).
Proceed on Stratford Avenue (Route 130) for about 0.7 miles.
Turn left onto Main Street (Route 113).
Proceed on Main Street (Route 113) for about 0.8 miles.
The Stratford Town Hall is located on the left.
The parking area is also located on the left just past the Town Hall.

From Hartford Area

Take I-91 South to I-95 South in the New Haven area.
Take I-95 South to Exit 31 (South Avenue) in Stratford.
At the end of the exit ramp, turn right onto South Avenue.
Proceed on South Avenue for about 0.1 miles until it ends at the intersection with Stratford Avenue (Route 130).
Turn right onto Stratford Avenue (Route 130).
Proceed on Stratford Avenue (Route 130) for about 0.7 miles.
Turn left onto Main Street (Route 113).
Proceed on Main Street (Route 113) for about 0.8 miles.
The Stratford Town Hall is located on the left.
The parking area is also located on the left just past the Town Hall.

From New Britain Area

Take Route 9 South to Interstate 91 South.
Take I-91 South to I-95 South in the New Haven area.
Take I-95 South to Exit 31 (South Avenue) in Stratford.
At the end of the exit ramp, turn right onto South Avenue.
Proceed on South Avenue for about 0.1 miles until it ends at the intersection with Stratford Avenue (Route 130).
Turn right onto Stratford Avenue (Route 130).
Proceed on Stratford Avenue (Route 130) for about 0.7 miles.
Turn left onto Main Street (Route 113).

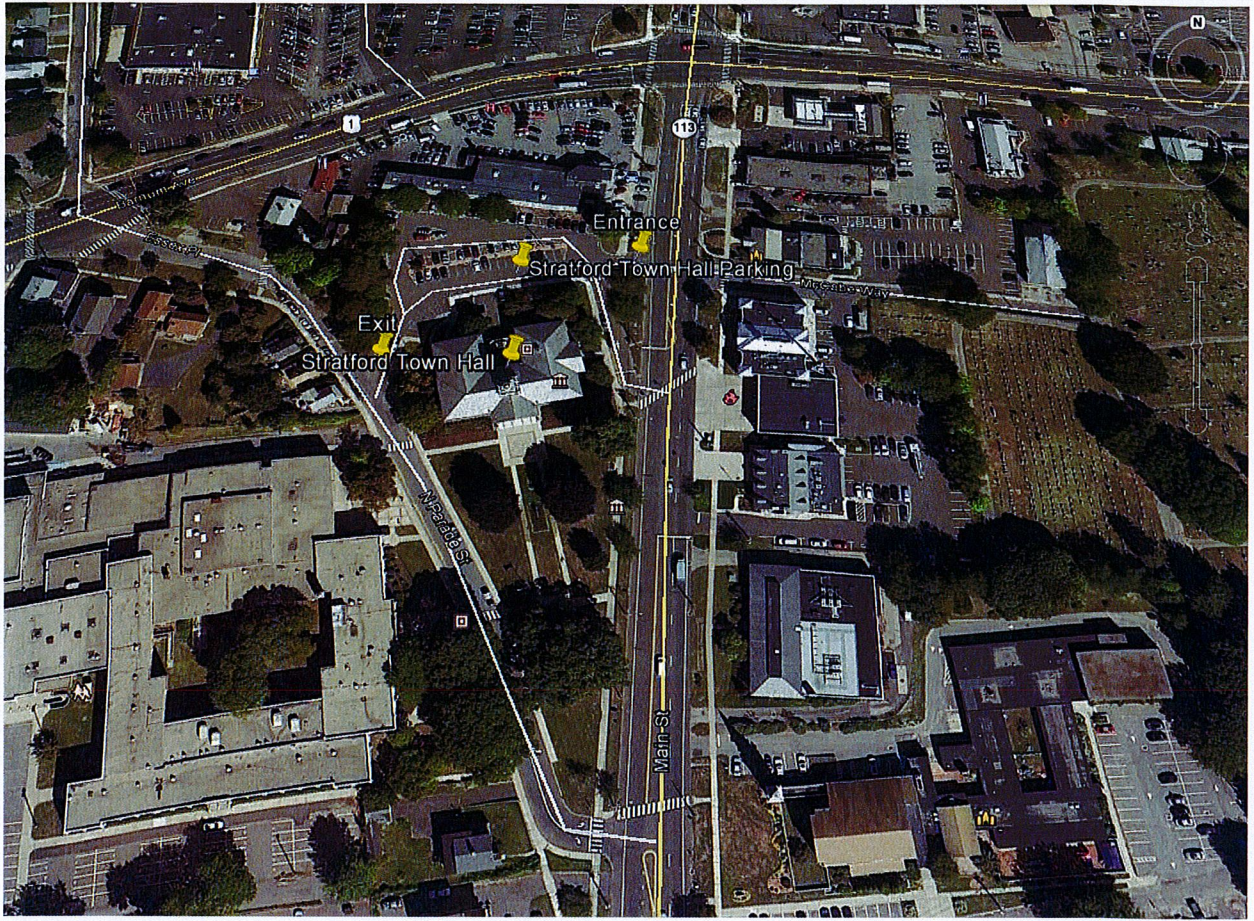
Proceed on Main Street (Route 113) for about 0.8 miles.
The Stratford Town Hall is located on the left.
The parking area is also located on the left just past the Town Hall.

From Stamford Area

Take I-95 North to Exit 31 (Honeyspot Road).
At the end of the exit ramp, turn left onto Honeyspot Road.
Proceed on Honeyspot Road for about 0.2 miles until it ends at the intersection with Stratford Avenue (Route 130).
Turn right onto Stratford Avenue (Route 130).
Proceed on Stratford Avenue (Route 130) for about 0.7 miles.
Turn left onto Main Street (Route 113).
Proceed on Main Street (Route 113) for about 0.8 miles.
The Stratford Town Hall is located on the left.
The parking area is also located on the left just past the Town Hall.

From Stonington Area

Take I-95 South to Exit 31 (South Avenue) in Stratford.
At the end of the exit ramp, turn right onto South Avenue.
Proceed on South Avenue for about 0.1 miles until it ends at the intersection with Stratford Avenue (Route 130).
Turn right onto Stratford Avenue (Route 130).
Proceed on Stratford Avenue (Route 130) for about 0.7 miles.
Turn left onto Main Street (Route 113).
Proceed on Main Street (Route 113) for about 0.8 miles.
The Stratford Town Hall is located on the left.
The parking area is also located on the left just past the Town Hall.



TO RESTAURANT: Stanziale's Restaurant, 595 Main Street, Stratford

FROM HEARING LOCATION: Stratford Town Hall, 2725 Main Street, Stratford

Exit to the rear of the parking lot.
Turn left onto N Parade Street.
Proceed straight for about 0.1 miles.
Turn right onto Main Street (Route 113).
Proceed on Main Street (Route 113) for about 1.9 miles.
Stanziale's Restaurant is located on the right at 595 Main Street, Stratford.

